

Freebies

Flaming Pear Software

What they do

How to install

Quick start

Other plug-ins

Questions

What they do

The Freebies are plug-ins for Photoshop and other paint programs. They change images in simple ways and you can use them free of charge.



How to install

Illustrated installation instructions are online at www.flamingpear.com/faq.html .

To use this software, you need a paint program which accepts standard Photoshop 3.02 plugins.

Just put the plug-in filter into the folder where your paint program expects to find it. If you have Photoshop, the folder is Photoshop:Plugins:Filters or Photoshop:Plug-ins. You must restart Photoshop before it will notice the new plug-in. It will appear in the menus as Filters->Flaming Pear->[name of plugin].

Most other paint programs follow a similar scheme.

If you have Paint Shop Pro: you have to create a new folder, put the plug-in filter into it, and then tell PSP to look there.

PSP 7:

Choose the menu File-> Preferences-> File Locations... and choose the Plug-in Filters tab. Use one of the "Browse" buttons to choose the folder that contains the plug-in.

The plug-in is now installed. To use it, open any image and select an area. From the menus, choose Effects->Plug-in Filters->Flaming Pear->[name of plugin].

PSP 8, 9, X, XI, and X2:

Choose the menu File-> Preferences-> File Locations... In the dialog box that appears, choose Plug-ins from the list. Click "Add." If you are using PSP 8 or 9, click "Browse". Now choose the folder that contains the plug-in.

The plug-in is now installed. To use it, open any image and select an area. From the menus, choose Effects->Plugins->Flaming Pear->[name of plugin].

Quick start

Most of these plug-ins do just one effect and have no controls.

Here are some example effects that you can do. Open a favorite picture for these examples -- you won't see anything if you start with a blank canvas. Select part of the picture, and invoke a plug-in.



original image

Tachyon

Tachyon ("Tak-ee-on," a faster-than-light particle) inverts the the bright and dark areas of your picture, but does not change the hues. Ordinary inversion would change blue to yellow, for example.



Tachyon

ChromaSolarize

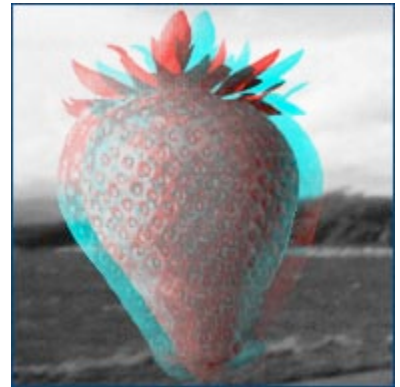
ChromaSolarize combines the Tachyon effect with solarization.



ChromaSolarize

Anaglyph Flip

Exchanges the left-eye and right-eye channels in red/cyan anaglyphic 3D pictures.



AnaglyphFlip

Pixel Trash

Produces a blocky, garish look like the most primitive graphics of 1982. Click the dice to see different effects.

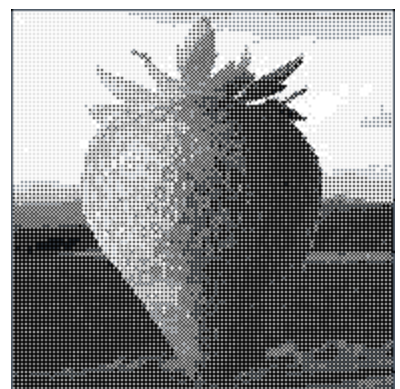


Pixel Trash

Demitone 25

Demitone 50

Two ways of making a quasi-Bayer halftone pattern that includes shades of grey.



Demitone 25

Swap Red & Blue

Swap Red & Green

Swap Green & Blue

These filters work on RGB images – those with three channels of color: red, green, and blue. By swapping data between channels, they transform color, changing the picture's chromatic harmonies in useful ways.



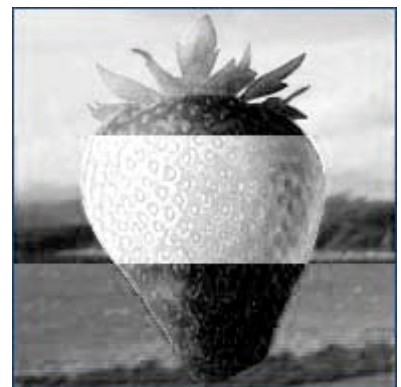
Swap Red & Green

Gray from Red

Gray from Green

Gray from Blue

These copy one color channel into both other channels.



Gray from Red/Green/Blue

Sphere Warp A

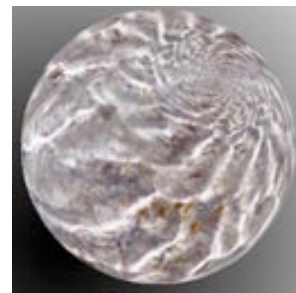
Sphere Warp B

These bend square tiles so they can texture-map a sphere without an ugly pinch at the poles.

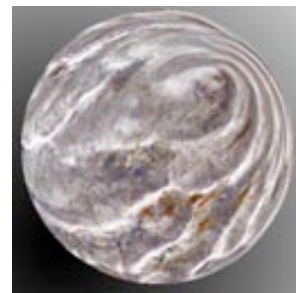
You will probably want to use two copies of the warped tile side-by-side to make an equirectangular sphere map.



plain square tile



Sphere Warp A

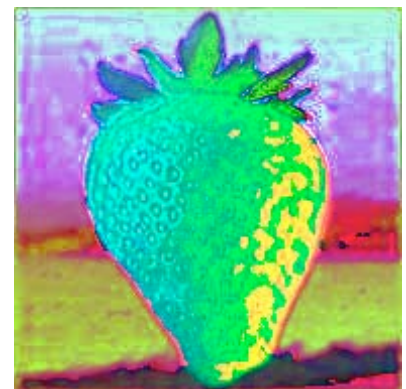


Sphere Warp B

RGB->HSL

HSL->RGB

RGB->HSL takes a normal image with its red, green, and blue color channels and replaces these with hue, saturation, and luminance respectively. Your paint program will think the image is still in RGB form, so the colors will look bizarre. HSL->RGB changes the image back.



RGB->HSL

RGB->Lab and

Lab->RGB

Like RGB->HSL, but for the Lab color space.

L is luminance, a is red/green, and b is blue/yellow.



RGB->HSL

Vitriol

Vitriol changes colors' contrast as if viewed through colored glass, but without tinting the image.

Imagine you want to use black-and-white film to take a spooky picture of a landscape. You could make the sky unnaturally dark by placing a yellow glass filter over the lens; this will make the blue sky very dark, while the appearance of the green landscape is affected very little.



Vitriol

It would be fun to do the same effect in color. Vitriol will get the contrast effect without the colorization. Just set the foreground color to the color of the imaginary colored glass, and choose Vitriol from the Filter menu.

Vitriol automatically provides density correction, so you can use a strongly colored filter without making your picture go dark. The effect is most vivid on areas of strongly saturated color; apply repeatedly to intensify the result.

Kyoto Color

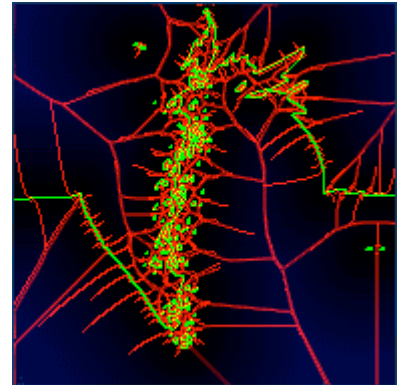
Kyoto Color changes color using a Hue/Luminance/Saturation color space, but it's not the same HLS color space built into Photoshop. The Kyoto space produces more lifelike results for massive hue changes.



Vitriol

Veins

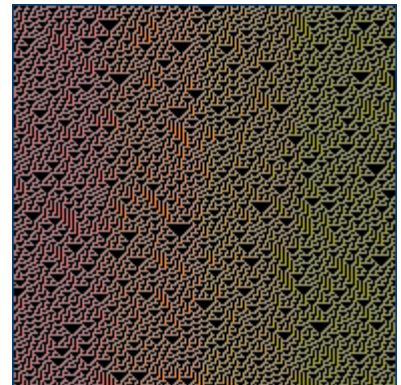
Draws a green contour, a blue distance map, and red ridges.



Veins

Rule30

Draws the [rule 30](#) cellular automaton starting from a random state.



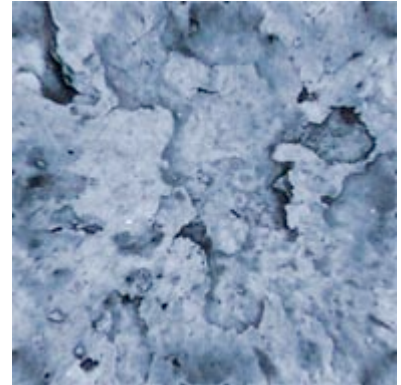
Rule 30

Make Cube Tile

Make Iso Cube Tile

Make Cube Tile takes a square image and modifies it so that six tiles can seamlessly cover a sphere. [Flexify](#) can use these tiles as input.

Make Iso Cube Tile preserves symmetry at the cost of a more warped appearance on the sphere.



Rule 30

Zombie

Revives the undead. Best results arise from portraits showing eyes and teeth.



Zombie

Zephyr

Produces colorful haze.



Zephyr

Circle to Square

Square to Circle

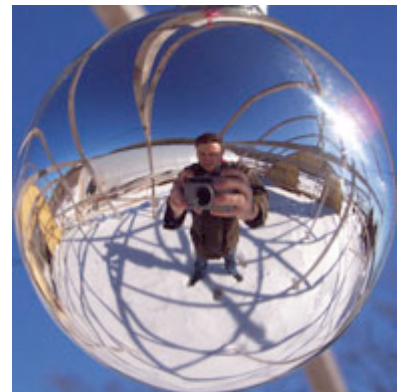
Warp global shape, preserve local shape.
Quicker and easier than a morph.



Circle to Square

Ornament

Ornament takes a photo of a mirrored ball and unwraps the reflection into a form called an [“equirectangular panorama.”](#)



Ornament

The following plug-ins only operate on layers with a transparency channel. In these examples the strawberry was in a different layer from the background.

Solidify A, B, and C

Solidify turns an image layer entirely 100% opaque. It reveals partially transparent areas, and can even help repair the corrupted transparency channel that some paint programs occasionally produce. It's also good for quickly filling in missing regions of a panorama.

Solidify A softly blurs the solid part into the transparent region. Solidify B smears only the outer edge for a harder look. Solidify C gives the smoothest, most uniform result.



Solidify

Ghost

Ghost turns an image layer into a semitransparent picture made entirely of black pixels. It produces a smoked-glass effect that's hard to produce by hand.



Ghost

AntiGhost

AntiGhost turns a layer's transparency values into shades of grey.



AntiGhost

TransLine

TransTone

TransLine makes every second scanline transparent. TransTone is similar, but turns a 50% pattern of pixels transparent. This can be useful if you are making transparent GIFs for the web.rs produces a surreal effect.



TransLine and TransTone

Other plug-ins

[Flaming Pear Software](#) has more complex filters available [here](#). They all come with a free trial period, after which they can be purchased online or off.

Questions

The software, documentation, and supporting materials are made by Flaming Pear Software. Answers to common technical questions appear on our [support page](#), and free updates appear periodically on the [download page](#).

Trouble with your order? Orders are handled by [Kagi](#); please contact them at admin@kagi.com.

For bug reports and technical questions about the software, please write to support@flamingpear.com.

©2010 Flaming Pear Software