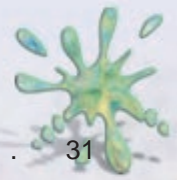




Contents

Welcome to KPT effects	3
KPT effects.	4
About KPT effects Help	6
KPT effects tutorials	7
About procreate.	7
Support and services	8
 Getting started with KPT effects	 13
Installing KPT effects	14
Accessing and quitting KPT effects filters	14
Exploring the workspace	16
Using panels and sliders	19
Previewing filter effects	20
Customizing the workspace	22
Storing workspace and panel settings	22
Working with presets	24
 Using KPT Ink Dropper	 27
Exploring the workspace	28



Creating ink drop effects	31
Choosing ink drop settings	34
Choosing an ink color	37
Setting the transparency of ink drops	40

Welcome to KPT effects

procreate™ presents KPT® effects™, the next generation of the revolutionary KPT series of filters designed to help you create dazzling and unique effects.

In this section, you'll learn about

- ♦ KPT effects filters
- ♦ KPT effects Help
- ♦ KPT effects tutorials
- ♦ **procreate**
- ♦ support and services

KPT effects

The KPT effects filters are KPT® Channel Surfing™, KPT® Fluid™, KPT® FraxFlame II™, KPT® Gradient Lab™, KPT® Hyper Tiling™, KPT® Ink Dropper™, KPT® Lightning, KPT® Pyramid Paint™, and KPT® Scatter™.

KPT Channel Surfing

The KPT Channel Surfing filter lets you apply effects to individual channels in an image. You can blur or sharpen a channel, or you can adjust its contrast or value. You can adjust the amount and transparency of the effect and control how the effect blends with the source image.

KPT Fluid

The KPT Fluid filter lets you manipulate images by applying liquid-like transformations and distortions that simulate dragging a brush across a wet surface. You can control the effect by setting the thickness of the fluid as well as the brush size and velocity. You can use various preview techniques to fine-tune the effect, and choose to save the fluid in motion as a movie.

KPT FraxFlame II

The KPT FraxFlame II filter lets you explore and mutate an infinite variety of flame fractals. You can also customize fractals with various color, contrast, and distortion techniques.

KPT Gradient Lab

The KPT Gradient Lab filter lets you create complex color blends with various levels of transparency. You can also customize gradients with interesting shapes, styles, and pixel distortions.

KPT Hyper Tiling

The KPT Hyper Tiling filter lets you create and save intricate tiling effects by reducing a source image to create a tile. The tile is then repeated to create a hypertiling effect. You can create different blends between the source image and the effect, and you can change the viewer's perceived distance from the effect. You can also change the depth, transparency, position, and size of the effect, and you can rotate it through space.

KPT Ink Dropper

The KPT Ink Dropper filter lets you create the effect of dropping colored liquid (ink) on a surface. You can create fluid drops, stains, and smoky swirls. You can choose the color of the liquid, and change its intensity and transparency. You can also change the size of the individual drops, and the rate at which they disperse on the surface.

KPT Lightning

The KPT Lightning filter lets you create customized lightning bolts. You can control every aspect of a lightning bolt, from setting its length and color, to

determining its path and how much it zags and wanders. The lightning effect can then be realistically integrated into your source image using one of several blend modes.

KPT Pyramid Paint

The KPT Pyramid Paint filter uses the Lab color mode to let you transform source images into effects that resemble paintings and perform various color and contrast adjustments to them.

KPT Scatter

The KPT Scatter filter lets you disperse particles over a source image. You can disperse a single particle or a grid of particles over an effect to emulate intricate effects such as paint strokes or mosaics. You can also use variants to create special effects based on the way particles interact with different components of a source image. You can control every aspect of particle placement, color, and shadow.

About KPT effects Help

The KPT effects Help assumes you are already familiar with basic Mac® OS and Windows® concepts — menus, dialog boxes, and mouse operations, such as clicking and dragging. If you need more information on these subjects, or about the Apple® Finder™ or the Windows desktop, refer to the Mac® OS User Manual or the Microsoft® Windows® User Guide, respectively.

KPT effects Help conventions

The KPT effects Help is for both Mac OS and Windows platforms. By convention, Mac OS commands precede Windows commands in the text. For example, Command/Ctrl + I, is equivalent to the Mac OS Command + I and the Windows Ctrl + I, and indicates that you must hold down the Command or Ctrl key, and press I. For simplicity, the term “folder” refers to directories as well as folders. The KPT effects interface for Mac OS and Windows platforms is identical.

KPT effects tutorials

The KPT effects tutorials introduce you to KPT effects and help you become productive quickly.

To access the tutorials, [click here](#).

The KPT effects tutorials page is updated regularly, and new tutorials are added as we create them.

About procreate

procreate is a new line of software expressly designed to extend the possibilities of creative professionals. It defines a new category of products that add enhanced capabilities to the user’s collection of tools. With **procreate**, creative professionals can bring their most ambitious ideas to life. Featuring KnockOut 2, KPT effects and Painter 7™, **procreate** makes the impossible possible.

Learn more. Visit www.procreate.com.

Support and services

We are committed to providing quality customer service and support that is easy to access and convenient to use, while fostering one-to-one customer relationships. If you have a question about the features and functions of our applications or operating systems, see the user guide or Help for the product you are using. Updates and technical information are also available in the Release Notes.

Registering products

Registering products is important. Registration provides you with timely access to the latest product updates, valuable information about product releases and access to free downloads, articles, tips and tricks, and special offers.

For more information about registering a product, see the Help for the product or see <http://www.corel.com/support/register> on the Internet.

Technical support

The Web address for Corel is <http://www.corel.com> on the Internet. A list of localized Corel Web sites is available at

<http://www.corel.com/international/> on the Internet.

Self-serve technical support options

Several self-serve tools are available to address technical questions 24 hours a day, seven days a week.

Support newsgroups

<http://www.corel.com/support/newsgroup.htm>

Knowledge base

<http://kb.corel.com>

FAQs

<http://www.corel.com/support/faq>

File Transfer Protocol (FTP)

<ftp://ftp.corel.com>

FTP information

<http://www.corel.com/support/downloads/index.htm>

Automated Fax on Demand*

1-877-422-6735

*Fax on Demand is available only in North America.

Telephone technical support options

Users can use complimentary and fee-based telephone technical support options. Three levels of support are available.

Classic Service

Classic Service is a complimentary, 30-day service designed to address installation, configuration, and new feature issues. This service begins on the day of your first technical support call.

Classic Service is a paid for service for OEM, “White box,” Jewel Case (CD only), trial, or Academic versions of products.

Priority Service

Priority Service is a fee-based service for users who require the help of second-level technicians. Priority Service may be purchased by the minute, by the incident, or on a term basis. Options range from core-business-hour access for individual users to around-the-clock access for multiuser environments.

Premium Service

Premium Service is the highest level of support. This service is designed for organizations that want to establish a direct relationship with Corel and for organizations that employ dedicated support professionals or have centralized technical management.

Customer Service

Customer Service can provide you with prompt and accurate information about product features, specifications, pricing, availability, and services. Customer Service does not provide technical support. You can access Customer Service support through the following avenues.

World Wide Web

You can access general customer service and product information at <http://www.procreate.com> on the Internet.

Mail, fax, email

You can send specific customer-service questions to Customer Service representatives by mail, fax, and email.

Corel Corporation
Corel Customer Service
1600 Carling Avenue
Ottawa, Ontario
Canada K1Z 8R7

Fax: 1-613-761-9176

Email: custserv2@corel.ca

Telephone

You can telephone Customer Service centers with your questions.

In North America, you can reach Customer Service by calling the 1-800-772-6735 toll-free line.

The hours of operation are 9:00 a.m. to 9:00 p.m., eastern time (ET), Monday through Friday, and 10:00 a.m. to 7:00 p.m. on Saturdays.

Corel customers outside North America can call a local authorized Corel Customer Service Partner.

Getting started with KPT effects

KPT effects is an extraordinary collection of filters that produce dazzling and unique effects for print and the Web. Whether you are a professional designer, artist, Web author, or hobbyist, the KPT effects filters will help you take your work to a new creative level, and enhance your productivity.

In this section, you'll learn about

- ♦ installing KPT effects
- ♦ accessing and quitting KPT effects filters
- ♦ the workspace
- ♦ using panels and sliders
- ♦ previewing filter effects
- ♦ customizing the workspace
- ♦ storing workspace and panel settings
- ♦ working with presets

Getting started with KPT effects

Installing KPT effects

You can install KPT effects in host applications compatible with Mac OS and Windows.

To install KPT effects in Mac OS

- 1 Insert the **KPT effects** CD into the computer's CD drive.
- 2 Browse to the **KPT effects** folder.
- 3 Double-click the **KPT effects installer** icon.
- 4 Follow the instructions on your screen.

To install KPT effects in Windows

- 1 Insert the **KPT effects** CD into the computer's CD drive.
- 2 Click **Install**.
- 3 Follow the instructions on your screen.

Accessing and quitting KPT effects filters

You can access a KPT effects filter from the host application. You can quit a KPT effects filter in two ways. You can quit a filter and apply the effect to the source image in the host application. You can also quit a filter without applying the effect to the source image in the host application.

Getting started with KPT effects

To access a filter

- ♦ Do one of the following:
 - ♦ In Adobe® Photoshop®, click **Filters** ▶ **KPT effects**, and click a filter.
 - ♦ In **Painter 7™**, click **Effects** ▶ **KPT effects**, and click a filter.
 - ♦ In Corel PHOTO-PAINT®10, click **Effects** ▶ **KPT effects**, and click a filter.
 - ♦ In Bryce®, click a flyout arrow in the **Pictures** dialog box in **Picture editor**, click **KPT effects**, and click a filter.



If you want to access a KPT effects filter in Bryce for the first time, you must first click a flyout arrow in the **Pictures** dialog box, click **Select plug-ins folder**, choose the folder where KPT effects is installed, and click **Choose/OK**.

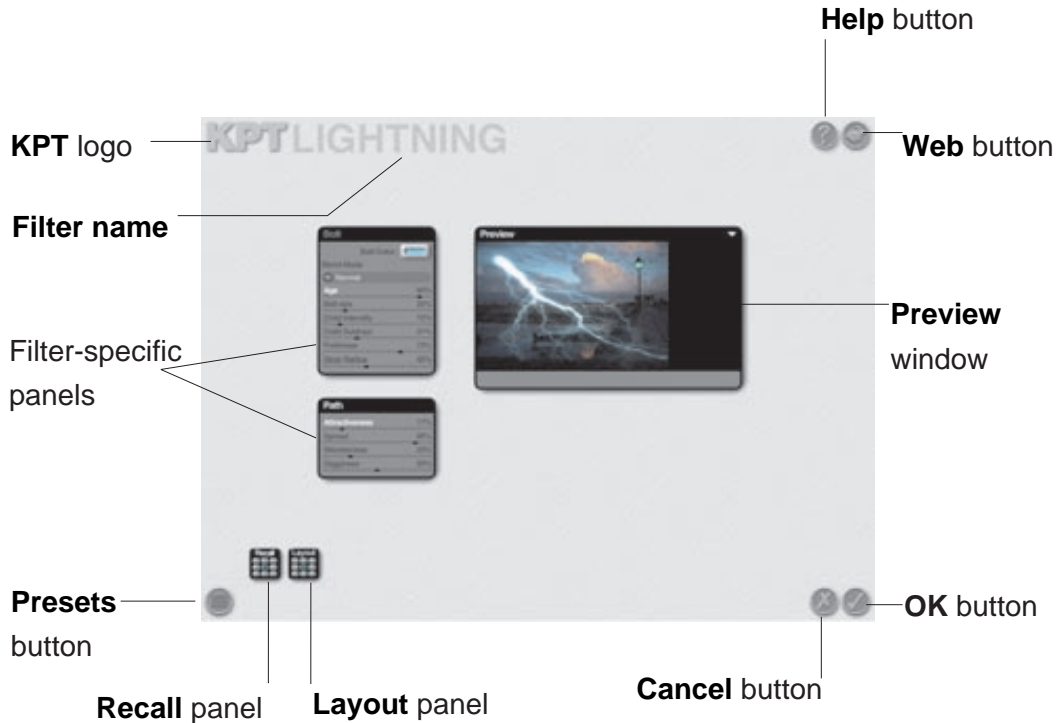
To quit a filter

- ♦ Click one of the following buttons:
 - ♦ **OK** — to quit a filter and apply the effect
 - ♦ **Cancel** — to quit a filter without applying the effect

Getting started with KPT effects

Exploring the workspace

The KPT effects workspace contains a **Preview** window and a set of controls.



Getting started with KPT effects

The following table provides a description of each common control in the KPT effects workspace, starting with the **Preview** window.

Control name	Description
Preview window	Lets you preview the effects you create. For more information about setting preview options, see “Previewing filter effects.”
KPT logo	Lets you customize the display of the KPT workspace, and access product information
Filter name	Lets you customize the display of panels. For more information about setting panel display options, see “Using panels and sliders.”
Web button	Lets you connect to the procreate Web site where you can access information about KPT effects and other procreate products

Getting started with KPT effects

Control name	Description
Help button	Lets you access the KPT effects Help
Layout panel	Lets you store workspace layout settings. For more information about using the Layout panel, see “Storing workspace and panel settings.”
Recall panel	Lets you store panel settings. For information about using the Recall panel, see “Storing workspace and panel settings.”
Presets button	Lets you load and store presets. For more information about using presets, see “Working with presets.”
Cancel button	Returns to the host application without applying the effect to the source image
OK button	Returns to the host application and applies the effect to the source image

Using panels and sliders

You can set the style in which panels display. You can also move sliders.

To set a panel display style

- 1 Click the filter name.
- 2 From the **Filter options** list box, choose one of the following styles:
 - ♦ **Panel auto popup** — to automatically expand panels as you move the pointer over them
 - ♦ **Panel manual popup** — to manually expand panels by clicking the **Cycler** button in the title bar
 - ♦ **Panel solo mode** — to expand the current panel and automatically collapse those not in use



In **Panel auto popup** mode, sliders expand to display a panel with additional controls you can use to adjust slider settings incrementally, and view previous slider settings (indicated by the location of the gray arrow).

Getting started with KPT effects



In **Panel manual popup** mode, you can expand a panel by clicking the **Cycler** button in the right corner of its title bar.

In **Panel solo mode**, you can collapse an expanded panel by double-clicking its title bar.

To move a slider

- ♦ Drag the black slider arrow.

Previewing filter effects

The **Preview** window lets you dynamically view the results of your work. You can apply a background to the **Preview** window. You can also move and size the **Preview** window.

To apply a background to the Preview window

- ♦ Click the flyout arrow in the **Preview** window, and choose one of the following options from the **Preview options** list box:
 - ♦ **Preview against black** — to display an effect against a solid black background
 - ♦ **Preview against white** — to display an effect against a solid white background

Getting started with KPT effects

- ♦ **Preview against checkerboard** — to display an effect against a background of gray squares
- ♦ **Preview against dark checkerboard** — to display an effect against a background of dark gray squares
- ♦ **Preview against gradient** — to display an effect against a grayscale gradient background



The effect only displays against the background while it is in the **Preview** window. The background is not applied to the source image in the host application, and does not impact the final render of the effect.

To move the Preview window

- ♦ Drag the title bar.

To size the Preview window

- 1 Click the flyout arrow in the **Preview** window.
- 2 From the **Preview options** list box, choose one of the following **Preview** window sizes:
 - ♦ **Small preview**
 - ♦ **Medium preview**
 - ♦ **Large preview**

Getting started with KPT effects

Customizing the workspace

You can apply a fun icon style to the common workspace. If the KPT workspace is smaller than the resolution of your screen, you can also display or hide common workspace controls.

To apply a fun icon style to the common workspace

- 1 Click the **KPT** logo.
- 2 Choose **Smileys!** from the **Global options** list box.

To display or hide common workspace controls

- 1 Click the **KPT** logo.
- 2 Choose **Black out screen** from the **Global options** list box.

Storing workspace and panel settings

Storing workspace settings lets you save different workspace layouts. For example, you can arrange all panels on one side of the workspace and enlarge the **Preview** window, and then save this layout for later use.

Storing panel settings lets you save and compare different versions of a filter effect.

The workspace and panel settings you save are retained from one session to another, so you can use them again and again. When you no longer need stored

Getting started with KPT effects

workspace and panel settings, you can clear them. You can also restore default workspace or panel settings.

To store workspace settings

- ♦ Click a gray memory dot in the **Layout** panel.



Empty memory dots display gray, full memory dots display green, and memory dots currently in use display yellow.

To store panel settings

- ♦ Click a gray memory dot in the **Recall** panel.

To use stored workspace or panel settings

- ♦ Click a green memory dot in one of the following panels:
 - ♦ **Layout** — to use stored workspace settings
 - ♦ **Recall** — to use stored panel settings

To clear stored workspace or panel settings

- ♦ Hold down **Option/Alt**, and click the corresponding green memory dot in one of the following panels:
 - ♦ **Layout** — to clear stored workspace settings
 - ♦ **Recall** — to clear stored panel settings

Getting started with KPT effects

To restore default workspace or panel settings

- ♦ Click the memory dot in the center of one of the following panels:
 - ♦ **Layout** — to restore default workspace settings
 - ♦ **Recall** — to restore default panel settings

Working with presets

Some KPT effects filters provide you with preset effects. You can load a preset effect. You can also save an effect you create as a preset. You can create multiple presets categories in which to organize the presets you store.

You can import and export presets.

To load a preset

- 1 Click the **Presets** button.
- 2 Double-click a preset thumbnail in the **Presets library** panel.

If the preset is stored in a category, you must first choose the category from the middle-left tile of the **Presets library** panel, then double-click a preset thumbnail.



You can preview a preset by single-clicking a preset thumbnail. A larger version of the preset thumbnail displays in the upper-left tile of the **Presets library** panel.

Getting started with KPT effects

To save an effect as a preset

- 1 Click the **Presets** button.
- 2 Choose a category from the middle-left tile of the **Presets library** panel.
- 3 Click **Add preset**.

A preset thumbnail displays in the **Presets library** panel.



You can also delete a preset from a category by clicking a preset thumbnail, and clicking **Delete preset**.

To create a presets category

- 1 Click the **Presets** button.
- 2 Click the flyout arrow in the **Presets library** panel, and click **Create new category**.

A text box displays in the middle-left tile of the **Presets library** panel.

- 3 Type a name.
- 4 Press **Return/Enter**.



Each category can store up to 24 presets.

Getting started with KPT effects

To import a preset

1 Click the **Presets** button.

2 Click **Import** in the **Presets library** panel.

If you want to import a preset to a specific category, you must first choose the category from the middle-left tile of the **Presets library** panel, and then click **Import**.

3 Choose the folder where the file is stored in the **From** dialog box.

4 Click the file.

5 Click **Open**.

The preset displays as a thumbnail in the **Presets library** panel.

To export a preset

1 Click the **Presets** button.

2 Choose a category from the middle-left tile of the **Presets library** panel.

3 Click a preset thumbnail.

4 Click **Export**.

5 In the **Save as** dialog box, type a filename in the **Save as** box.

6 In the **Where** box, choose the folder where you want to export the file.

7 Click **Save**.

Using KPT Ink Dropper

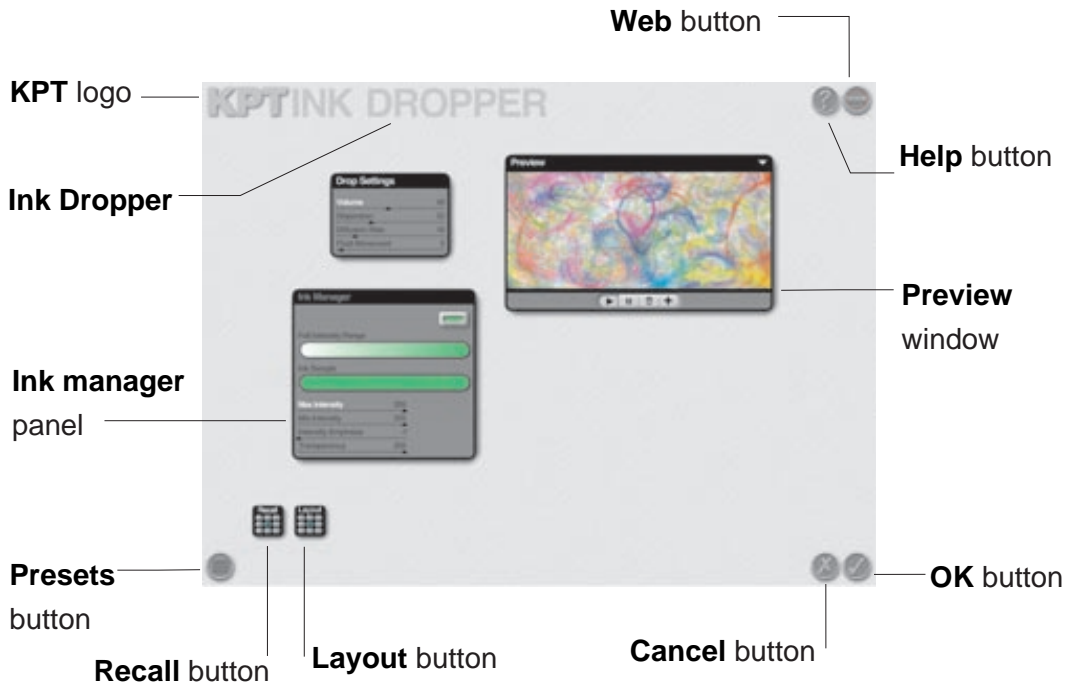
The KPT Ink Dropper filter creates the effect of dropping colored liquid (ink) onto a surface. You can use this filter to create drops, stains, and smoky swirls. You can choose the color of the liquid, and change its intensity and transparency. You can also change the size of the individual drops, and the rate at which they disperse on the surface.

In this section, you'll learn about

- ♦ the workspace
- ♦ creating ink drop effects
- ♦ choosing ink drop settings
- ♦ choosing an ink color
- ♦ setting the transparency of ink drops

Exploring the workspace

The KPT Ink Dropper workspace contains a **Preview** window and a set of panels and controls.



Using KPT Ink Dropper

The following table provides a description of each control in KPT Ink Dropper, starting with the filter-specific panels.

Control name	Description
Drop settings panel	Lets you control the volume, dispersion, diffusion, and movement of the ink drops
Ink manager panel	Lets you choose the ink color, intensity, and level of transparency of the ink
Preview window	Lets you preview, start, play, pause, and delete an ink drop effect. For information about setting preview options, see “Previewing filter effects.”
KPT logo	Lets you customize the display of the KPT workspace, and access product information

Using KPT Ink Dropper

Filter name	Lets you customize the display of panels. For more information about setting panel display options, see “Using panels and sliders.”
Web button	Lets you connect to the procreate Web site where you can access information about KPT effects and other procreate products
Help button	Lets you access the KPT effects Help
Layout panel	Lets you store workspace layout settings. For more information about using the Layout panel, see “Storing workspace and panel settings.”
Recall panel	Lets you store panel settings. For information about using the Recall panel, see “Storing workspace and panel settings.”

Using KPT Ink Dropper

Presets button

Lets you load and store presets. For more information about using presets, see [“Working with presets.”](#)

Cancel button

Returns to the host application without applying the effect to the source image

OK button

Returns to the host application and applies the effect to the source image

Creating ink drop effects

KTP Ink Dropper lets you create ink drop effects. You can start an effect, preview it, pause it, and start it again. If you are not satisfied with the results, you can delete the effect.



A sample of an ink drop effect

To start an ink drop effect

- ♦ Click in the **Preview** window.



To drop more ink, click in the **Preview** window, and hold down the mouse button.

To play an ink drop effect

- ♦ Click the **Play** button at the bottom of the **Preview** window.



The **Preview** window is set to **Play** by default. When you click in the **Preview** window, an ink drop effect starts immediately.

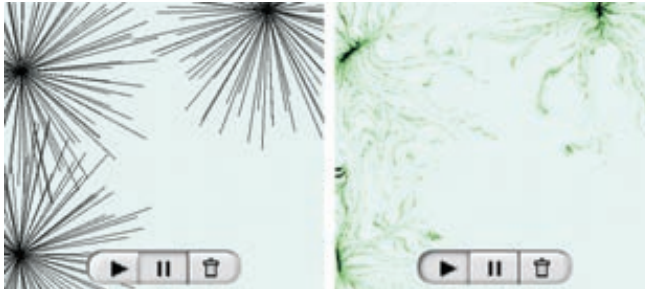
To pause an ink drop effect

- ♦ Click the **Pause** button at the bottom of the **Preview** window.

If you click in the **Preview** window, the ink drop will be registered, but won't move beyond that.



You can change the color, and adjust the color intensity and transparency of the ink while the **Pause** button appears pressed. For more information about color intensity and transparency, see [“Choosing an ink color”](#) and [“Setting the transparency of ink drops.”](#)



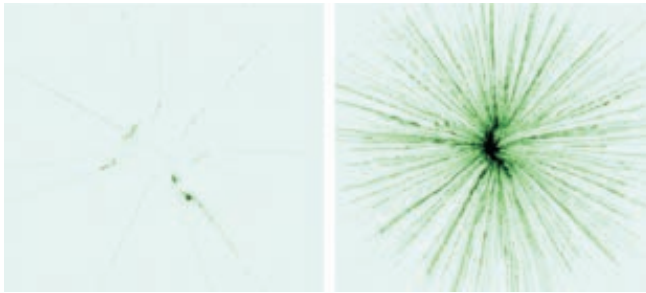
Registering an ink drop effect with the Pause button pressed (left); applying an ink drop effect (right)

To delete an ink drop effect

- ♦ Click the **Trash** button at the bottom of the **Preview** window.

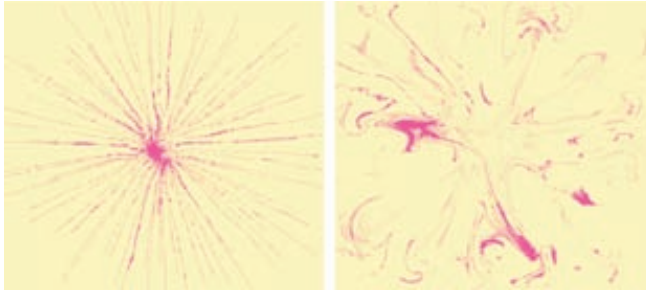
Choosing ink drop settings

You can set the amount of liquid you drop on a surface, and control the spread of the ink drops. For example, you can concentrate a drop in one area, or you can create a wide splatter.



An ink drop effect with a small amount of ink applied (left), and an effect with a large amount of ink

You can also control the rate at which a drop spreads over a surface, and the movement of the ink drops and splatter marks. For example, you can create a thicker splatter, such as a drop of paint on canvas, or a splatter that quickly blends into another liquid, such as a drop of ink in water.



A thicker splatter (left), and a quick blending splatter (right)

To set the amount of liquid drop

- ♦ Move the **Volume** slider in the **Drop settings** panel.



The higher the **Volume** value, the larger the amount of liquid.



You can set a precise **Volume** value by expanding the **Drop settings** panel and typing a value in the numeric area on the additional slider control. For information about using expanded panels, see [“Using panels and sliders.”](#)

To set the spread of a drop

- ♦ Move the **Dispersion** slider in the **Drop settings** panel.



A low dispersion value means that the drop is concentrated in one area. A high dispersion value means that the drop creates a wide splatter.



You can set a precise **Dispersion** value by expanding the **Drop settings** panel and typing a value in the numeric area on the additional slider control. For information about using expanded panels, see [“Using panels and sliders.”](#)

To set the diffusion rate of a drop

- ♦ Move the **Diffusion rate** slider in the **Drop settings** panel.



Diffusion rate controls the rate at which the ink drop spreads out over the image.



You can set a precise **Diffusion rate** value by expanding the **Drop settings** panel and typing a value in the numeric area on the additional slider control. For information about using expanded panels, see [“Using panels and sliders.”](#)

To set the movement of a drop and splatter marks

- ♦ Move the **Fluid movement** slider in the **Drop settings** panel.

Using KPT Ink Dropper



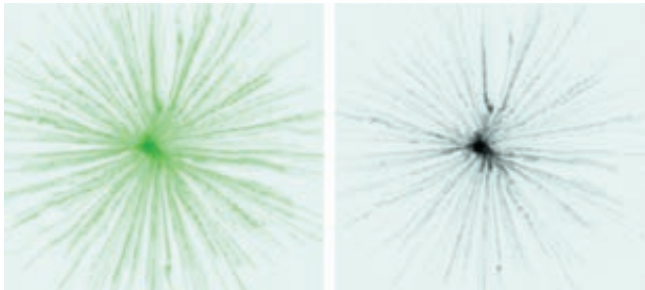
A low **Fluid movement** value creates the effect of a drop of paint on canvas. A high **Fluid movement** value creates the effect of a drop that quickly blends into another liquid, such as a drop of ink in water.



You can set a precise **Fluid movement** value by expanding the **Drop settings** panel and typing a value in the numeric area on the additional slider control. For information about using expanded panels, see [“Using panels and sliders.”](#)

Choosing an ink color

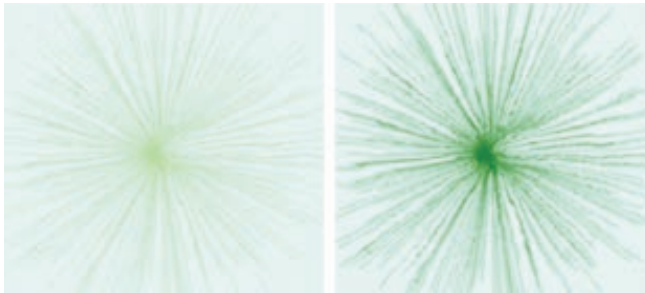
You can apply a color or shade of gray to the ink creating the ink drop effect.



An ink drop effect with color applied (left), and an effect with a shade of gray applied (right)

Using KPT Ink Dropper

You can set the color intensity based on the RGB color values. By adjusting the color intensity, you set the value range of the ink color. The maximum color value is displayed in areas of high ink concentration, while the minimum color value is displayed in areas of low ink concentration. You can also increase the overall intensity of the ink color. This will make the ink color deeper, bringing it closer to black.



An ink drop effect with different intensity values applied

To choose an ink color

- 1 In the **Ink manager** panel, click and hold the color swatch to activate the **Color** picker.
- 2 Drag the pointer over one of the following bars:
 - ♦ **Color** bar — to apply a color
 - ♦ **Grayscale** bar — to apply a shade of gray



Full intensity range shows the full range (from 0 to 255) of the ink color.

Ink sample shows the color range that is applied to an ink drop. Increasing or decreasing the **Min** and **Max intensity**, as well as the **Intensity emphasis** updates the **Ink sample**.

To set the intensity of the ink color

- ♦ In the **Ink manager** panel, move one of the following sliders:
 - ♦ **Max intensity** — sets the maximum range of the ink color
 - ♦ **Min intensity** — sets the minimum range of the ink color
 - ♦ **Intensity emphasis** — increases the overall intensity of the ink color



The **Max intensity** value can never be lower than the **Min intensity** value. If you move the **Min intensity** slider past the **Max intensity** slider, **Max intensity** is automatically increased.

Increasing and decreasing the **Min** and **Max intensity** updates the **Ink sample**. Increasing and decreasing the **Intensity emphasis** updates both the **Full intensity range** and the **Ink sample**.

Using KPT Ink Dropper



You can set a homogeneous ink color, by choosing equal **Max** and **Min intensity** values.

You can set the ink color to have the minimum and maximum range levels that you originally chose, by setting the **Intensity emphasis** value to 0.

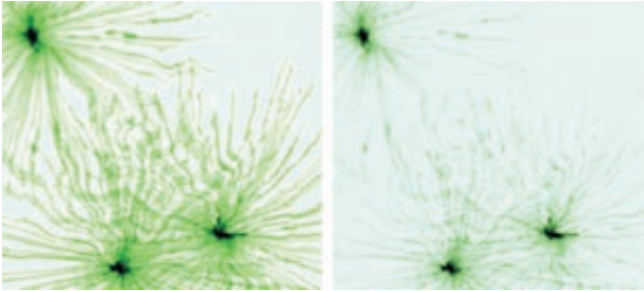


An ink drop effect with Max and Min intensity set to 0, and Intensity emphasis set to 0 (left) and 255

Setting the transparency of ink drops

You can set the level of transparency of ink drops.

Using KPT Ink Dropper



An ink drop effect with low transparency value(left) and high transparency value(right)

To adjust the transparency of ink drops

- ♦ Move the **Transparency** slider in the **Ink manager** panel.



If the **Transparency** value is set to 0, ink drops are fully opaque. If the **Transparency** value is set to 255, ink drops are almost fully transparent.



You can set a precise **Transparency** value by expanding the **Ink manager** panel and typing a value in the numeric area on the additional slider control. For information about using expanded panels, see [“Using panels and sliders.”](#)